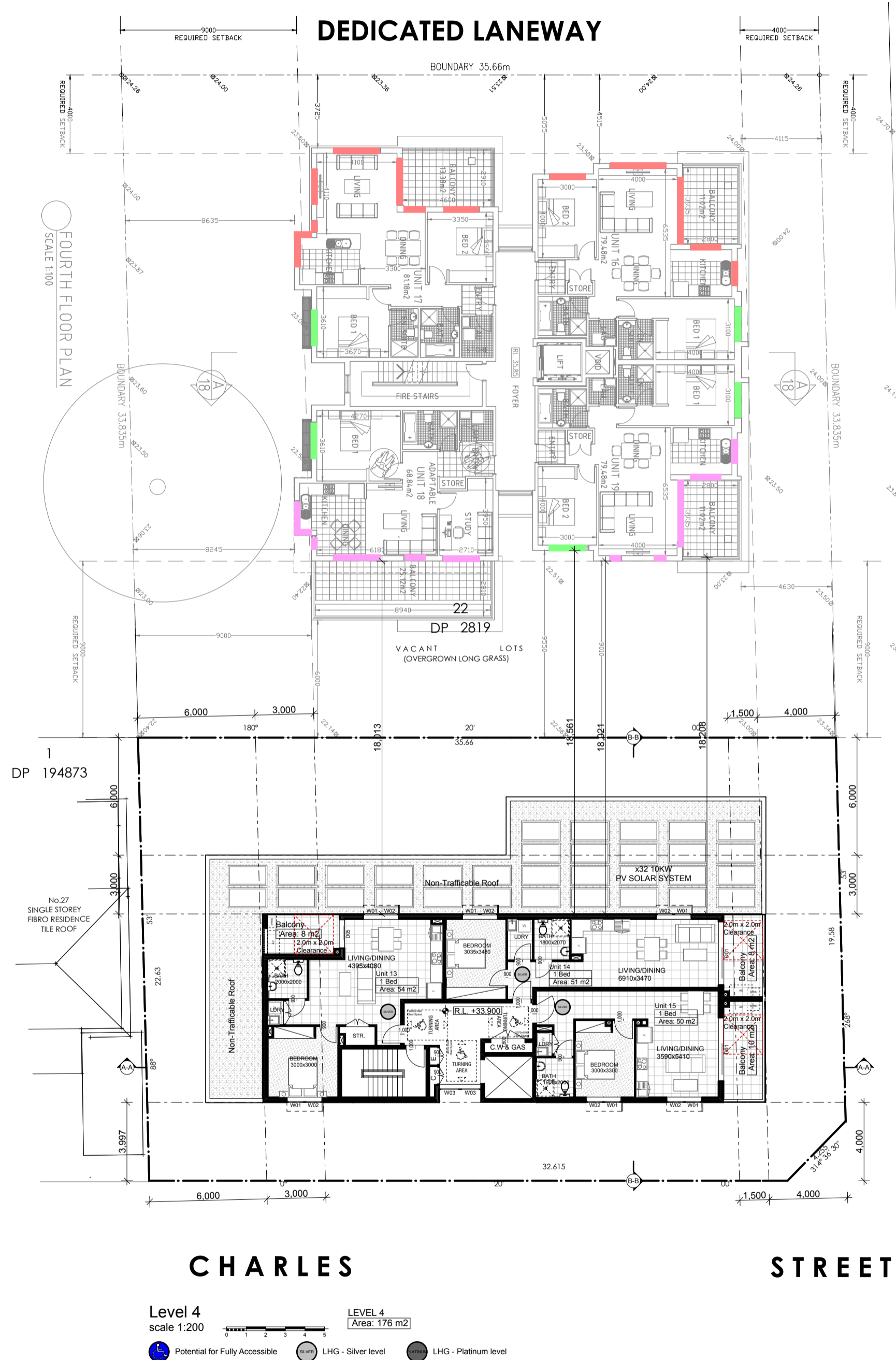
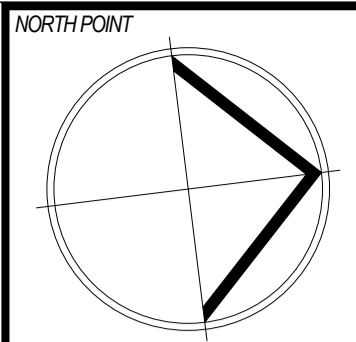


TYPICAL L1 - L3



TYPICAL L4 - L7



All work to be carried out in accordance with BCA AS 1546.2009 conditions.  
Copyright: The concepts & information contained in these drawings are the copyright of Idrift Group Pty Ltd. Use or duplication in part or in full without written permission of Idrift Group Pty Ltd constitutes an infringement of copyright. Do not scale off architectural drawings. These notes must be read in conjunction with current editions for additional details on appliances, PC items & shower sizes shown on plan are made too dimensions shower screens to be fitted in inside of non-bulkheads may be required to accommodate drainage lines & steel beams position to be determined on site. Use liquid dimensions ONLY, do not scale. Finished ground levels shown on plans are subject to site conditions. If calculated dimensions are subject to site measure during construction & no difference has been made for storage or fitting position of electrical meter to be determined on site in accordance to the final position front garden top on meter.  
Energy Smart Design: AAA rated water conservation devices include universal sink shower heads, valve tap flow regulators, dual flush toilets & showers & compliant hot water systems with minimum green house score of 3.5 stars are to be used in this development. All occupants are encouraged to use AAAA rated dish washing machines with front loading where possible.

NOTES

REV	DATE	DESCRIPTION	REV	DATE	DESCRIPTION
1	21/07/20	REVISED CONCEPT BASED ON DRG AND PRE DA COMMENTS	2		
2			3		
3			4		
4			5		
5			6		
6			7		
7			8		
8			9		
9			10		
10			11		
11			12		
12			13		
13			14		
14			15		
15			16		
16			17		
17			18		
18			19		
19			20		
20			21		
21			22		
22			23		
23			24		
24			25		
25			26		
26			27		
27			28		
28			29		
29			30		
30			31		
31			32		
32			33		
33			34		
34			35		
35			36		
36			37		
37			38		
38			39		
39			40		
40			41		
41			42		
42			43		
43			44		
44			45		
45			46		
46			47		
47			48		
48			49		
49			50		
50			51		
51			52		
52			53		
53			54		
54			55		
55			56		
56			57		
57			58		
58			59		
59			60		
60			61		
61			62		
62			63		
63			64		
64			65		
65			66		
66			67		
67			68		
68			69		
69			70		
70			71		
71			72		
72			73		
73			74		
74			75		
75			76		
76			77		
77			78		
78			79		
79			80		
80			81		
81			82		
82			83		
83			84		
84			85		
85			86		
86			87		
87			88		
88			89		
89			90		
90			91		
91			92		
92			93		
93			94		
94			95		
95			96		
96			97		
97			98		
98			99		
99			100		

**IDRAFT ARCHITECTS**

Nominated Architect  
Nominating Body NSW Architects Registration Board (SAR)

project:  
Demolition & construction of a eight (8) storey Residential development containing 23 units under ARHSEPP

client:  
Hume Community Housing

council:  
Liverpool City Council

drawing title:  
**Consolidated Plans - Mill Road**

designed + drawn:  
M.Trinh & P.Revollar

Issue/Stage:  
**DA - ISSUE A**

paper/scale:  
A2/1:200

date:  
10/12/2020

job #:  
28705

dwg #:  
4008